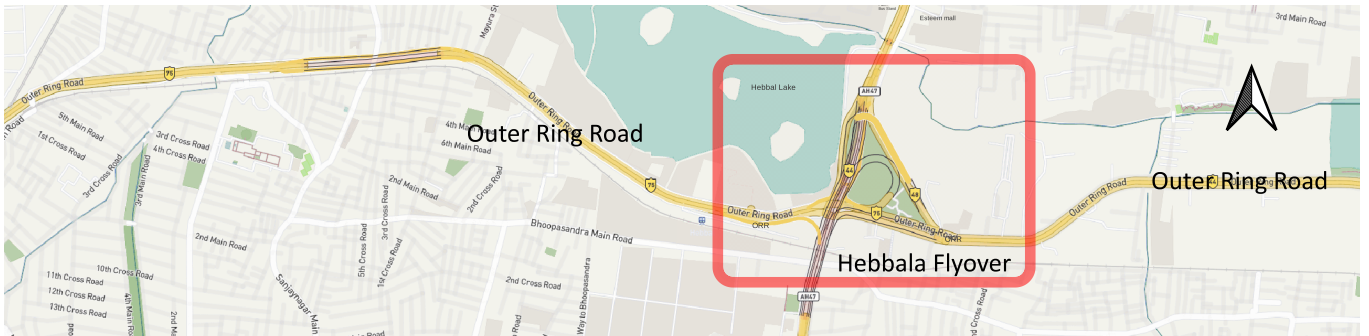




SafeYelli.in
SafeYelli in Bengaluru?



Streetlights and Sidewalks Near and Under the Hebbala Flyover: Are they Safe for Women?

We mapped the **conditions of the streetlights and sidewalks near the Hebbala Flyover**. These are particularly **unsafe roads for women under dark conditions**. Some areas **don't have sidewalks, some are dangerously dark**. This report will compile our findings.

High resolution interactive maps are available at safeyelli.in/mapping-hebbala

Date of audit: 18, 19 November 2022
Date of publishing: 24 December 2022

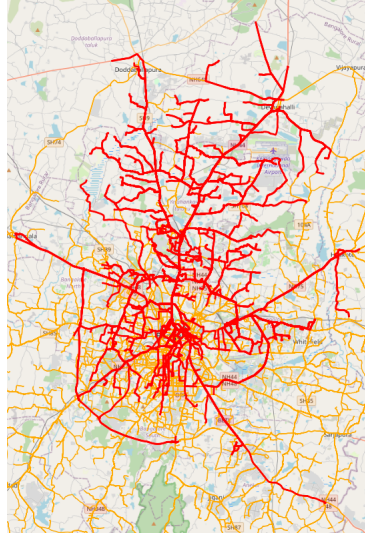


Image of the bus routes that pass through Hebbal

Hebbal serves as the commute hub for a large population from the northern side of the city. At the same time, it presents a difficult and unsafe experience for those who have to change busses or walk through the unprotected railway level crossing. The streets are dark, the area under the flyover is dangerously pitch-black and the sidewalks absent in some sections. All of this is documented and presented in this report.

Methodology and Primary Data

Data was collected from primary observation and marking by volunteers on QField. While the data represents the overall conditions well, individual statuses might vary depending on the time since last update.

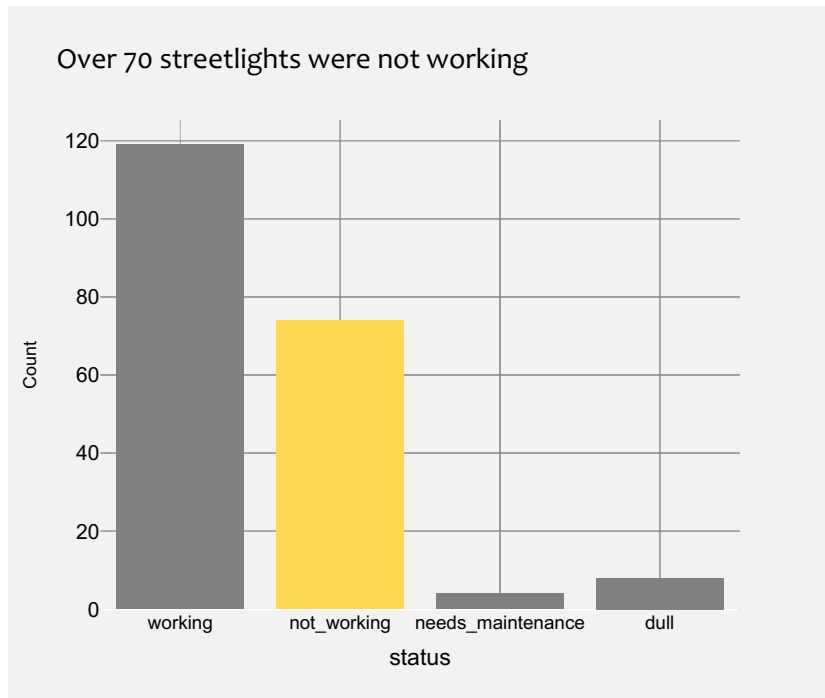
Open Data policy

This data will be released on our Github at <https://github.com/Safe-Yelli>

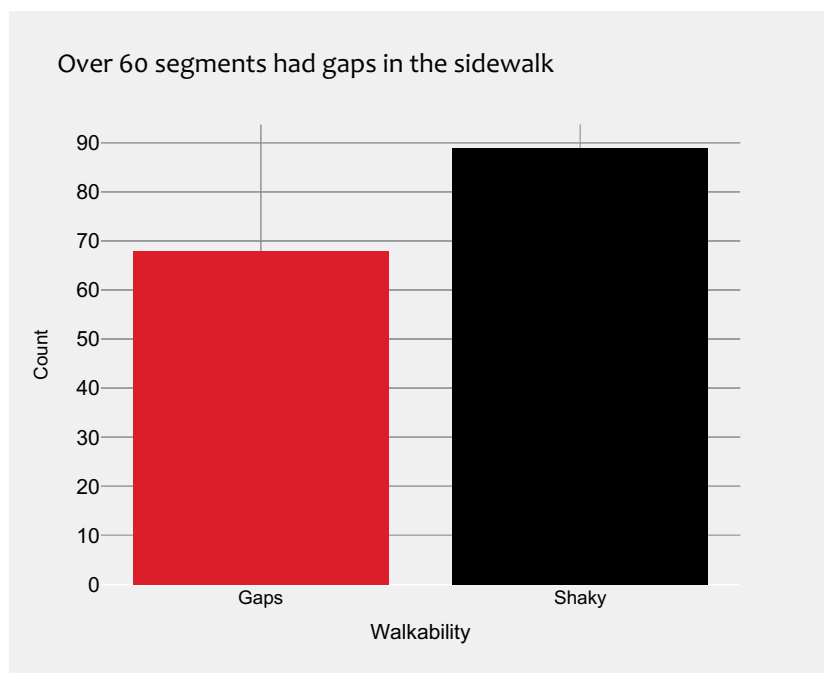
Acknowledgements

This project was conducted in collaboration with Blr Design Week and the Rotract Club of Atria.

Content	Pg Number
1 Overview	3
2 Map of Streetlight conditions	4
3 Map of Sidewalk conditions	5
4 Particular problem areas	6,7



Many streetlights are found to be physically fine, but were not switched on. Many are neglected because of the bright advertisements that do not provide illumination on the sidewalks.



Many sidewalks are broken, that combined with a lack of lighting puts people in danger. Sidewalks are therefore not used as much as they should be.



Military Dairy Farm Bus Stand
Esteem mall

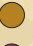


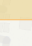
Hebbal Lake

ORR

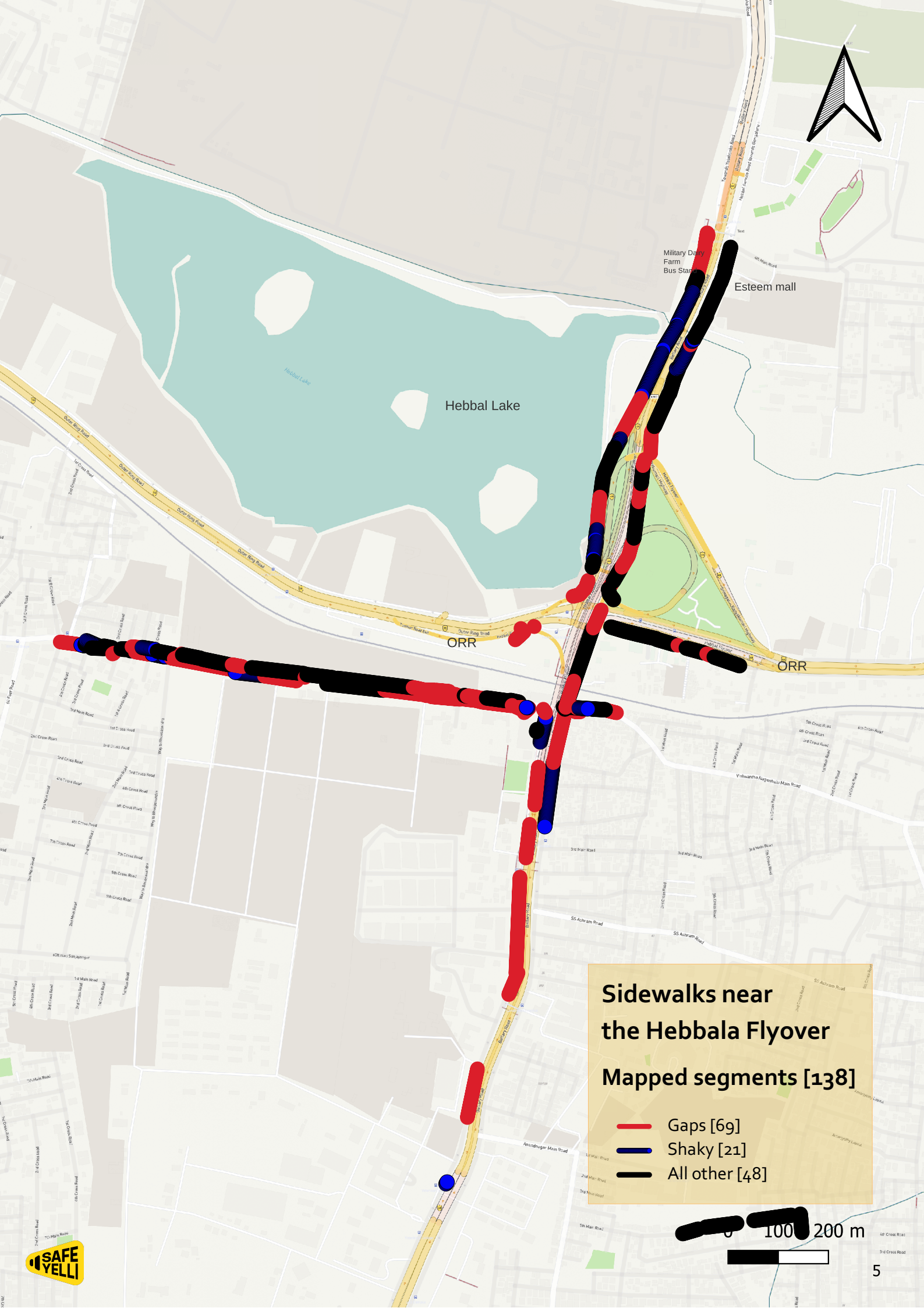
ORR

Streetlights near the Hebbala Flyover

Mapped streetlights [212]

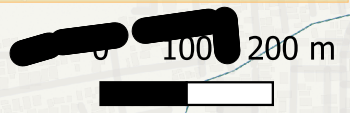
-  Dull [8]
-  Needs maintenance [4]
-  Not working [74]
-  Working [119]

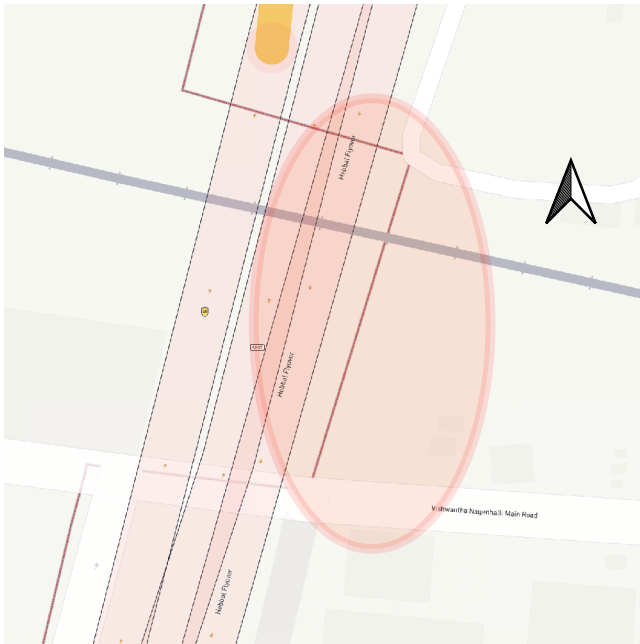




Sidewalks near the Hebbala Flyover
Mapped segments [138]

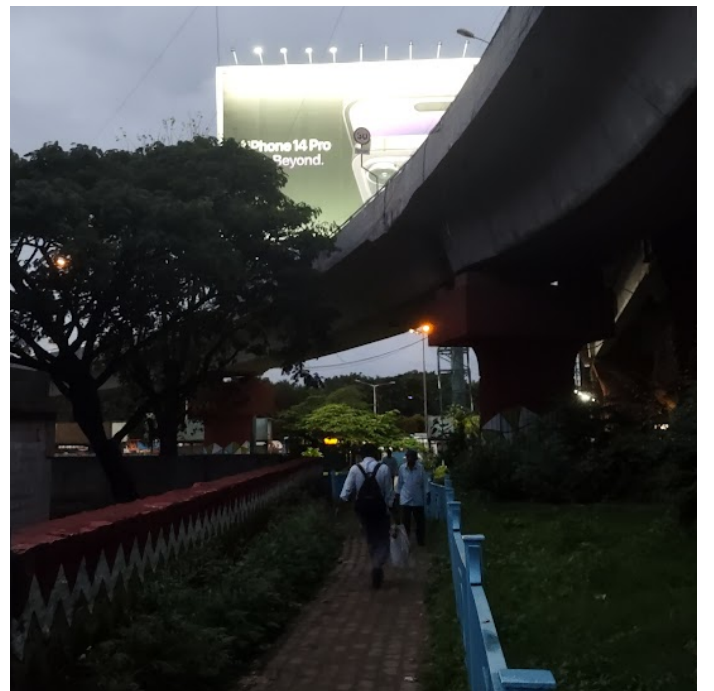
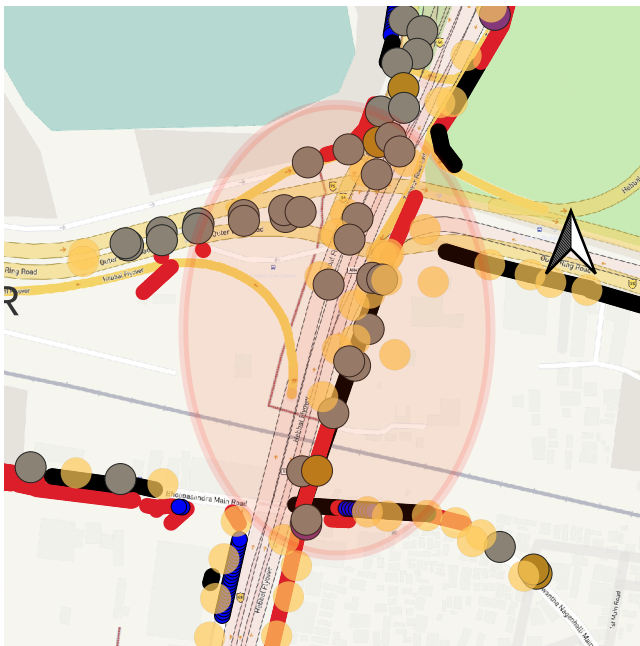
- █ Gaps [69]
- █ Shaky [21]
- █ All other [48]





Level Crossing with no protection,

Vehicles, Cattle and People cross this track in groups through the day. In the evenings, there is insufficient lighting to cross comfortably. This is a safety hazard.



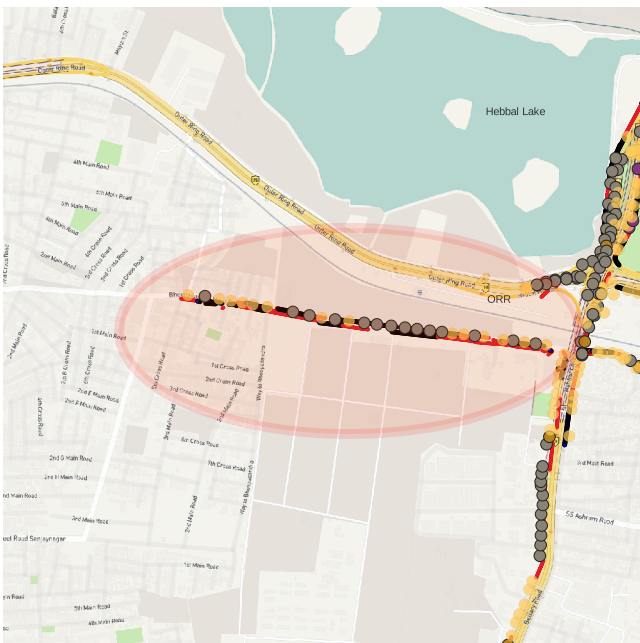
Lighting and space under the flyover leading to the bustands on the ORR

Lighting on the green spaces and path from the track to the BusStand is very low and women avoid these spaces after sundown. The green spaces under the flyover are not lit at all and present a daunting task to walk next to. Especially when the path crossing through has garbage and is used to urinate in.



Lack of sidewalk and lighting near the Hebbal Lake leading to Military Dairy Farm Bus Stand

On the day of the audit, all lighting on the side of the lake was off while advertisement bill boards were on. There are also no sidewalks leading to the Military Dairy Farm Bus Stand.



Lighting and sidewalk width leading to Bhoosandra road

Both sides of the road are filled with large, unused complexes, this combined with spotty lighting and tiny sidewalks make it dangerous. The only light on the road is from vehicles moving toward Hebbal.